

Name: Raymond Lau

Class: 3A(14)

Instructions:

1. Copy the following poem in the space provided.
2. Write in blue or black pen.
3. Use *cursive writing*.

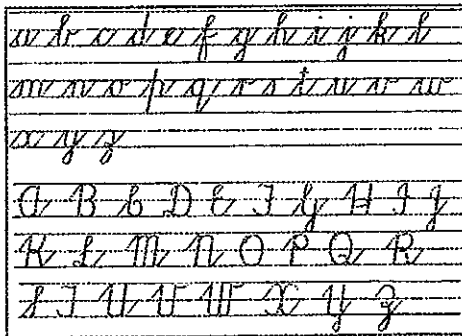
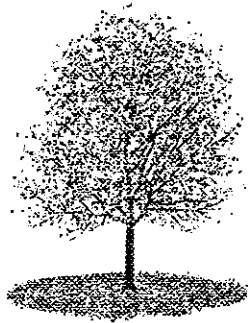
Loveliest of Trees

by A. E. Houseman

Loveliest of trees, the cherry now
Is hung with bloom along the bough,
And stands about the woodland ride
Wearing white for Eastertide.

Now, of my threescore years and ten,
Twenty will not come again,
And take from seventy springs a score,
It only leaves me fifty more.

And since to look at things in bloom
Fifty springs are little room,
About the woodlands I will go
To see the cherry hung with snow.



Loveliest of Trees By A.E Houseman
Loveliest of Trees, the cherry now
Is hung with bloom along the bough,
And stands about the woodland ride
Wearing white for Eastertide.

Now, of my threescore years and ten,
Twenty will not come again,
And take from seventy spring a score,
It only leaves me fifty more.

And since to look at things in bloom
Fifty spring are little room,
About the woodlands I will go
To see the cherry hung with snow.